

**Wayne Schwartz Construction Ltd.**  
A Division of Miller Paving Limited  
581443 Grey Rd 25  
Chesley, ON  
N0G 1L0

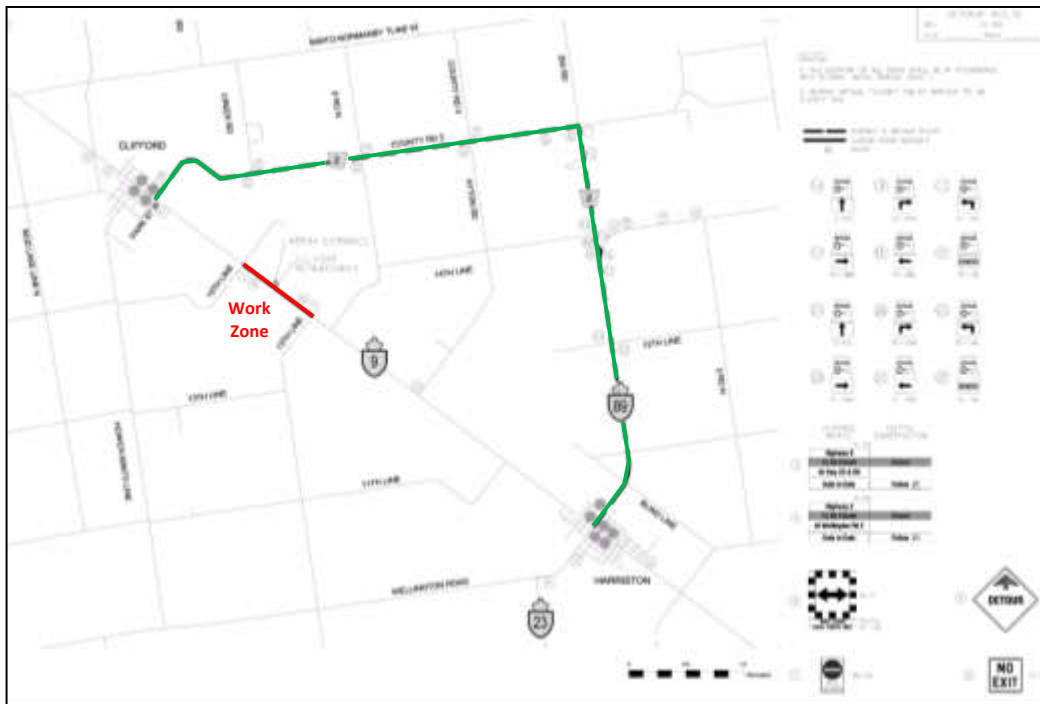


## NOTIFICATION

September 26, 2017

**To:** Town of Minto  
**Contract:** Box Culvert Rehabilitation MTO Contract 2017-3294  
**Re:** Notice of Closure Highway 9

Wayne Schwartz Construction Ltd. (WSCL) is notifying the above that it is our intent to close Highway 9 between 13<sup>th</sup> Line and 15<sup>th</sup> line starting Monday October 16, 2017 to Wednesday October 18, 2017. Main detour route to be via Highway 89, County Road 2. See map below-reference only. Should you have any questions or concerns please don't hesitate to call me.



Thank-you

A handwritten signature in black ink, appearing to read 'Matt Cummins'.

Matt Cummins  
Miller Group  
519-387-0561