
TOWN OF MINTO



COMMUNITY PROFILE

Prepared By:



SAUGEEN
ECONOMIC DEVELOPMENT CORPORATION
A Community Futures Development Corporation
554 7th Avenue, Hanover, Ontario, N4N 2J7
Tel (519) 364-3694 Fax (519) 364-6384
www.sbdc.ca



LOCATION

With a population of 36,000, the Saugeen community is a group of neighbouring towns, townships and municipalities with a shared economic base, market place, workforce, and history. Residents of the Saugeen City move freely between the towns, townships and municipalities for goods and services.



**Highway Distances from
Minto to Major Centres**

| | km | mile |
|----------------------|-----|------|
| Windsor/Detroit..... | 375 | 235 |
| Sarnia/Port Huron... | 240 | 150 |
| London..... | 175 | 110 |
| Kitchener..... | 130 | 80 |
| Hamilton..... | 190 | 120 |
| Fort Erie/Buffalo... | 285 | 180 |
| Toronto..... | 205 | 125 |
| Oshawa..... | 250 | 155 |
| Ottawa..... | 605 | 375 |
| Montreal..... | 750 | 465 |

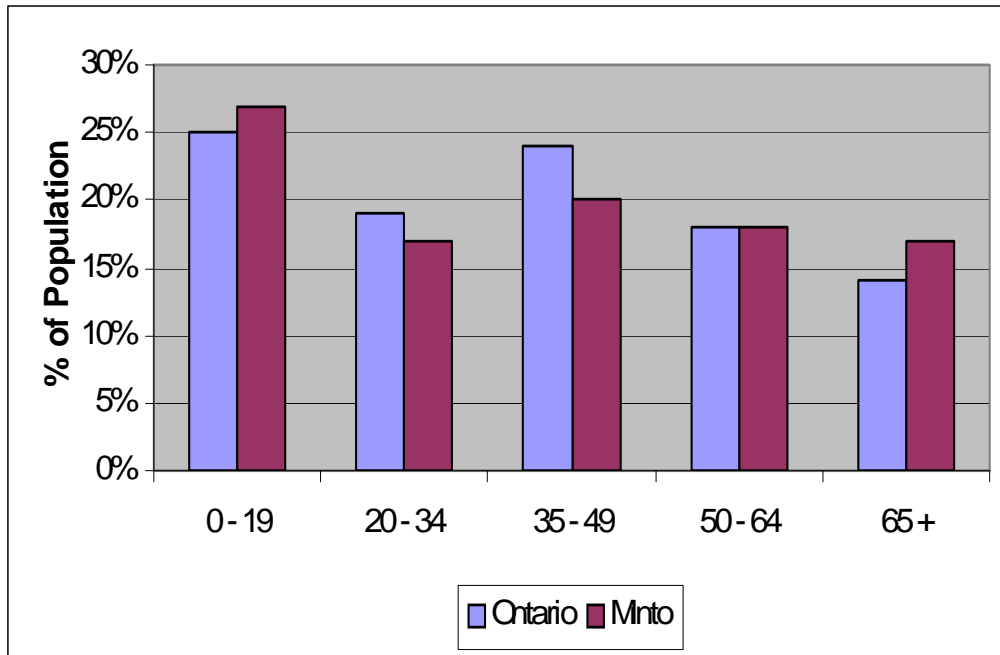
The Town of Minto is located on the north-western boundary of Wellington County, well situated mid-way between the major centres of southern Ontario and popular recreational areas along the eastern shore of Lake Huron and southern Georgian Bay. It is only a 1 to 1½ hour drive from the municipality to cities in Canada’s “Golden Horseshoe” industrial heartland, like Toronto and Hamilton, and under an hour to Kitchener-Waterloo and Guelph. The City of Owen Sound offers Great Lakes port and Shipping facilities, as does the Town of Goderich situated approximately 100 kilometres to the southwest.

POPULATION

POPULATION BY FIVE-YEAR AGE GROUPS AND GENDER

| Age Group | Both Genders | Male | Female |
|------------------|--------------|--------------|--------------|
| 0 - 4 | 510 | 260 | 250 |
| 5 - 9 | 585 | 310 | 275 |
| 10 - 14 | 620 | 330 | 290 |
| 15 - 19 | 615 | 295 | 320 |
| 20 - 24 | 560 | 295 | 265 |
| 25 - 29 | 405 | 205 | 200 |
| 30 - 34 | 475 | 235 | 240 |
| 35 - 39 | 495 | 255 | 240 |
| 40 - 44 | 600 | 300 | 300 |
| 45 - 49 | 635 | 315 | 320 |
| 50 - 54 | 585 | 285 | 300 |
| 55 - 59 | 535 | 270 | 265 |
| 60 - 64 | 410 | 210 | 200 |
| 65 - 74 | 725 | 350 | 375 |
| 75+ | 750 | 305 | 445 |
| Total Pop | 8,505 | 4,220 | 4,285 |

POPULATION COMPARISON TO ONTARIO BY AGE GROUP

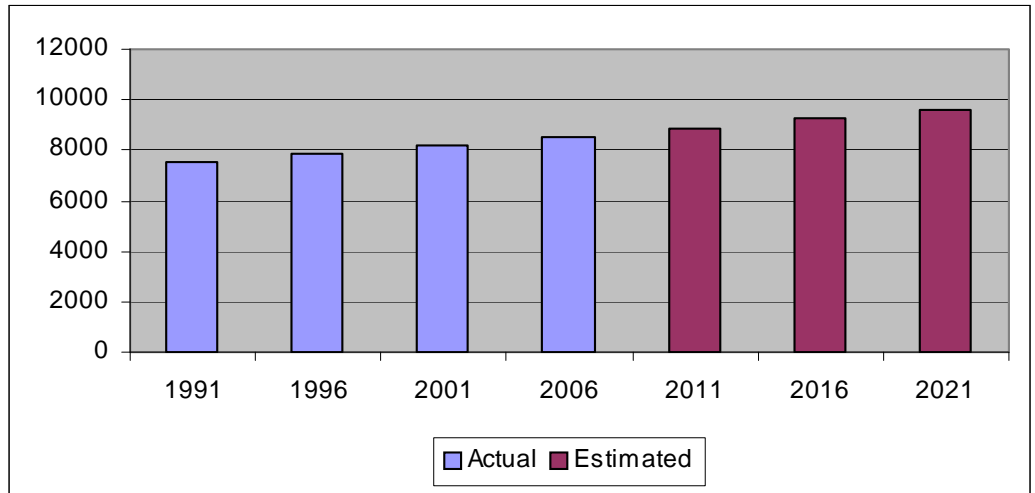


Source: Statistics Canada 2006

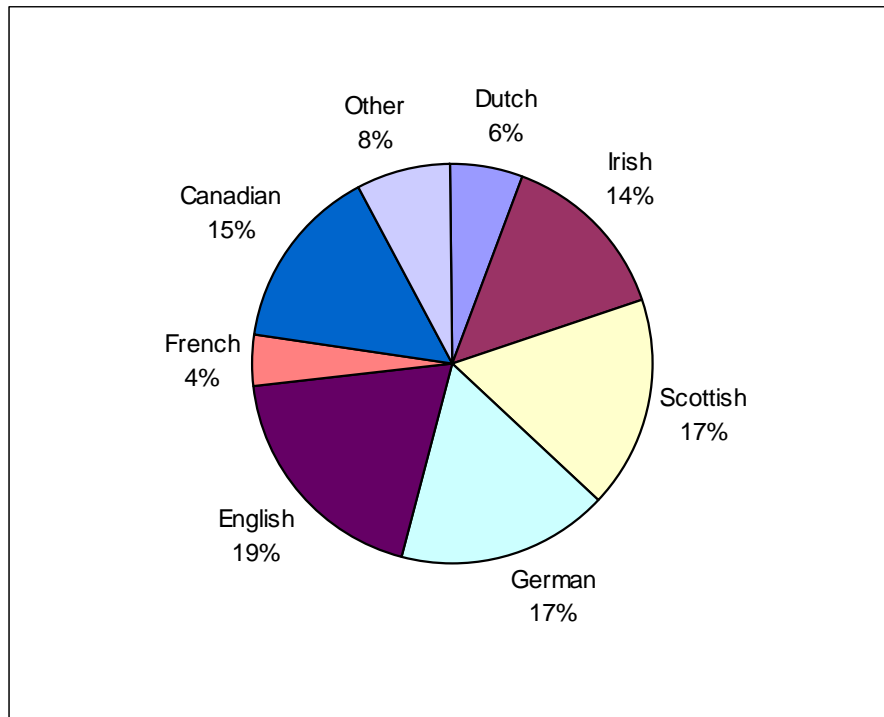
POPULATION

POPULATION GROWTH

1991.....7,546
1996.....7,854
2001.....8,164
2006.....8,505
2011.....8,860 est.
2016.....9,230 est.
2021.....9,616 est.



ETHNIC ORIGIN

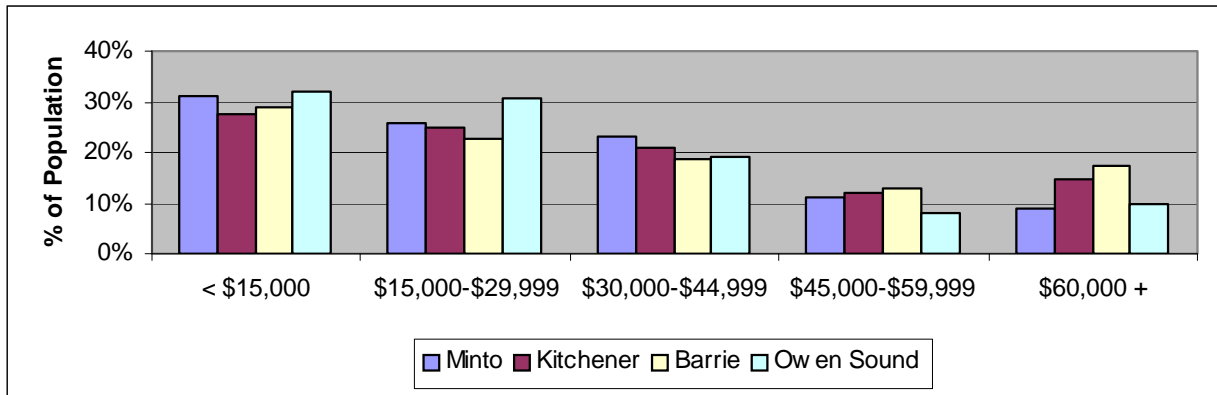


Source: Statistics Canada 2006

INCOME

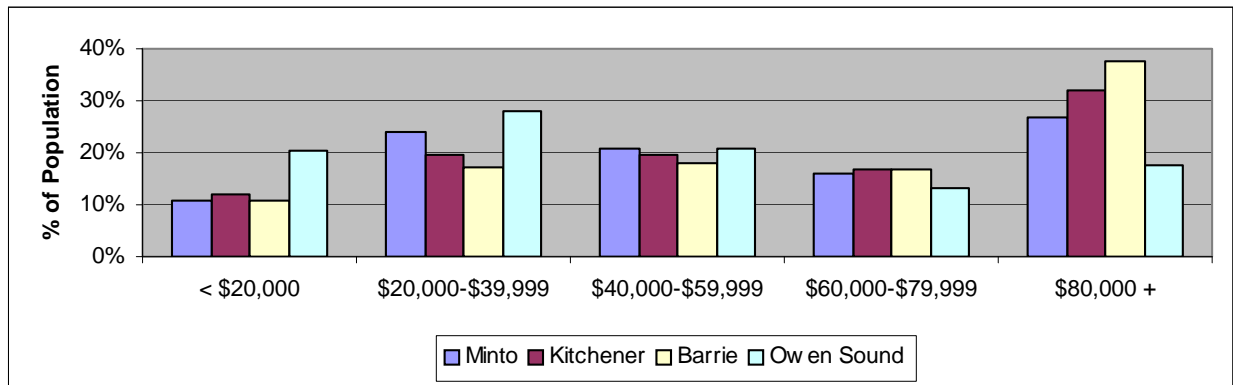
TOTAL INCOME BY GENDER AND INCOME GROUP

| Income Group | Number of People | | | | | |
|-----------------------|------------------|-----------------|-----------------|-----------------|-----------------|------------------|
| | Male | Minto Female | Total | Kitchener Total | Barrie Total | Owen Sound Total |
| Under \$15,000 | 690 | 1,230 | 1,935 | 43,125 | 27,430 | 5,390 |
| \$15,000 - \$29,999 | 650 | 1,000 | 1,650 | 39,065 | 21,680 | 5,155 |
| \$30,000 - \$44,999 | 765 | 685 | 1,455 | 32,880 | 17,610 | 3,215 |
| \$45,000 - \$59,999 | 550 | 165 | 715 | 19,230 | 12,135 | 1,365 |
| \$60,000 and over | 485 | 90 | 575 | 23,390 | 16,485 | 1,655 |
| 15+ with income | 3,150 | 3,180 | 6,330 | 157,710 | 95,340 | 16,785 |
| Average Income | \$38,824 | \$22,427 | \$30,583 | \$35,648 | \$35,737 | \$29,093 |



HOUSEHOLD INCOME DISTRIBUTION

| Income Level | Number of Households | | | |
|-----------------------|----------------------|-----------------|-----------------|-----------------|
| | Minto | Kitchener | Barrie | Owen Sound |
| Under \$20,000 | 355 | 9,520 | 4,935 | 1,925 |
| \$20,000 - \$39,999 | 765 | 15,460 | 7,955 | 2,620 |
| \$40,000 - \$59,999 | 645 | 15,510 | 8,315 | 1,950 |
| \$60,000 - \$79,999 | 500 | 13,445 | 7,835 | 1,245 |
| \$80,000 and over | 850 | 25,540 | 17,480 | 1,655 |
| Total | 3,125 | 79,485 | 46,515 | 9,380 |
| Average Income | \$61,953 | \$70,620 | \$73,134 | \$51,952 |



Source: Statistics Canada 2001

LABOUR

LABOUR FORCE 15 YEARS AND OVER BY INDUSTRY DIVISIONS

| Industry Divisions | Total | % of Workforce | |
|---|--------------|----------------|--------------|
| | | Minto | Ontario |
| Manufacturing | 1,020 | 23.0 | 13.7 |
| Agriculture, Forestry Fishing and Hunting | 590 | 13.3 | 1.7 |
| Retail Trade | 390 | 8.8 | 10.9 |
| Health Care and Social Assistance | 480 | 10.8 | 9.3 |
| Construction | 330 | 7.4 | 5.8 |
| Wholesale Trade | 220 | 5.0 | 4.7 |
| Other Services (Except Public Administration) | 190 | 4.3 | 4.6 |
| Transportation and Warehousing | 200 | 4.5 | 4.7 |
| Accommodation and Food Services | 200 | 4.5 | 6.3 |
| Educational Services | 250 | 5.6 | 6.6 |
| Administrative, Support, Waste Management and Remediation Services | 155 | 3.5 | 4.8 |
| Finance and Insurance | 65 | 1.5 | 4.8 |
| Public Administration | 45 | 1.0 | 5.3 |
| Arts, Entertainment and Recreation | 45 | 1.0 | 2.1 |
| Professional, Scientific and Technical Services | 60 | 1.4 | 7.2 |
| Real Estate and Rental and Leasing | 45 | 1.0 | 1.9 |
| Information and Cultural Industries | 75 | 1.7 | 2.6 |
| Utilities | 55 | 1.2 | 0.8 |
| Management of Companies and Enterprises | 0 | 0.0 | 0.1 |
| Mining and Oil and Gas Extraction | 15 | 0.3 | 0.4 |
| Total Labour Force | 4,435 | 100.0 | 100.0 |

LABOUR FORCE 15 YEARS AND OVER BY OCCUPATION AND GENDER

| Occupation | Male | Female | Total |
|--|--------------|--------------|--------------|
| Trades, Transport and Equipment Operators and Related Occupations | 925 | 70 | 1,000 |
| Sales and Service Occupations | 330 | 490 | 820 |
| Occupations Unique to Primary Industry | 375 | 205 | 575 |
| Business, Finance and Administration Occupations | 80 | 460 | 540 |
| Occupations Unique to Processing, Manufacturing and Utilities | 310 | 290 | 600 |
| Management Occupations | 195 | 85 | 280 |
| Social Science, Education, Government Service and Religious Occupations | 50 | 155 | 205 |
| Health Occupations | 55 | 200 | 260 |
| Occupations in Art, Culture, Recreation and Sport | 10 | 15 | 20 |
| Natural and Applied Sciences and Related Occupations | 80 | 45 | 125 |
| Total Labour Force | 2,415 | 2,020 | 4,435 |

Source: Statistics Canada 2006

LABOUR

Occupations and Wage Rates

The following is a list of prevailing wage rates for standard occupations determined by the Service Canada for the Grey-Bruce-Simcoe-Muskoka area, as of December 31, 2007. These wage rates are to be considered as guidelines only and specific information should be obtained from individual employers. Please note that current minimum wage in Ontario may not be reflected in this data.

| <u>Occupation</u> | <u>Prevailing Wage Range</u> | | <u>Average</u> |
|---|------------------------------|---------|----------------|
| Accounting and Related Clerks | \$12.00 | \$23.42 | \$17.07 |
| Administrative Clerks | \$11.50 | \$24.31 | \$16.99 |
| Automotive Mechanical Installers and Servicers | \$8.75 | \$19.50 | \$12.25 |
| Bookkeepers | \$11.00 | \$20.85 | \$15.38 |
| Carpenters | \$13.00 | \$30.80 | \$19.91 |
| Construction Trades Helpers and Labourers | \$12.00 | \$26.80 | \$17.05 |
| Cooks | \$8.75 | \$16.77 | \$11.41 |
| Data Entry Clerks | \$11.01 | \$23.82 | \$18.04 |
| Dental Assistants | \$15.00 | \$25.16 | \$17.91 |
| Early Childhood Educators and Assistants | \$9.25 | \$20.07 | \$13.60 |
| Electricians (Except Industrial and Power System) | \$12.50 | \$35.00 | \$21.65 |
| Elementary School and Kindergarten Teachers | \$18.83 | \$39.16 | \$28.71 |
| Food and Beverage Servers | \$7.60 | \$13.65 | \$9.50 |
| General Office Clerks | \$11.00 | \$22.54 | \$16.10 |
| Heavy Equipment Operators | \$15.00 | \$31.00 | \$20.76 |
| Industrial Electricians | \$20.16 | \$37.00 | \$25.88 |
| Janitors, Caretakers and Building Superintendents | \$9.55 | \$19.90 | \$14.65 |
| Manufacturing Managers | \$17.14 | \$41.26 | \$27.89 |
| Material Handlers | \$11.50 | \$20.60 | \$15.53 |
| Nurse Aides, Orderlies and Patient Service Associates | \$11.80 | \$20.34 | \$16.32 |
| Plumbers | \$13.00 | \$29.55 | \$19.84 |
| Receptionists and Switchboard Operators | \$10.00 | \$19.08 | \$13.98 |
| Registered Nurses | \$22.50 | \$40.00 | \$32.12 |
| Restaurant and Food Service Managers | \$10.72 | \$20.12 | \$13.72 |
| Roofers and Shinglers | \$12.30 | \$22.13 | \$17.35 |
| Secondary School Teachers | \$19.01 | \$41.69 | \$29.37 |
| Shippers and Receivers | \$10.00 | \$18.96 | \$14.46 |
| Truck Drivers | \$13.33 | \$22.50 | \$17.48 |
| Welders and Related Machine Operators | \$12.88 | \$22.53 | \$17.49 |

BUSINESSES IN MINTO

For a complete listing of businesses in the Town of Minto, please visit the Minto Chamber of Commerce website www.minto-chamber.on.ca.

TRAINING AND EMPLOYMENT ASSISTANCE

Service Canada/Ministry of Training, Colleges and Universities (MTCU)

<http://www.ontario.ca/en/gic/004897>

Services available at this location:

1. Answers to frequently asked questions about government services
2. Referrals to government staff who can provide specialized help
3. Access to government's Internet to search programs, services or staff
4. Free government publications including Ontario Parks Guide, Fishing and Hunting Regulations, Power of Attorney Kits, etc
5. Supply of and assistance with Application Forms for government services such as Birth and Death Certificates, Health Cards, Social Insurance Numbers, etc
6. Order government publications electronically using POOL (Publications Ontario on-line), the Ontario government's virtual bookstore
7. Access to Ontario Business Connects terminals or Web site to register/renew your business name, conduct a business name search and make your applications for Retail Sales Tax permit (RST), Employer Health Tax number (EHT) and register with the Workplace Safety and Insurance Board (WSIB)
8. Access to [Life Events](#) information packages such as Losing Your Wallet and Getting Married
9. Access to Online Government Services, including On-line Change of Address service
10. Community Information and Bulletin Board
11. File Landlord and Tenant Board applications
12. Ministry of Labour Employment Standards Claim acceptance
13. Ministry of Natural Resources Fish & Wildlife services, information and sales

For government services in Grey-Bruce call:

1 888 647-3654 Toll Free

(519) 371-6226

(519) 371-6336 Fax

TRAINING AND EMPLOYMENT ASSISTANCE

Y Employment Services

www.ymcaowensound.on.ca

The YMCA Employment Services operating locally, provides free confidential employment counselling for both youth and adults. With offices in Owen Sound, Hanover and Walkerton, the program includes:

- 1 A RESOURCE CENTRE offering free internet access, computers for word processing, job postings and newspapers.
- 2 EMPLOYMENT COUNSELLORS who are available by appointment to help people identify career goals and offer support for a job search and assistance with resume preparation.
- 3 ON THE JOB TRAINING for participants who meet program eligibility requirements.

Saugeen Business Development Centre (SBDC)

554 7th Avenue, Hanover
(519) 364-3694
www.sbdc.ca

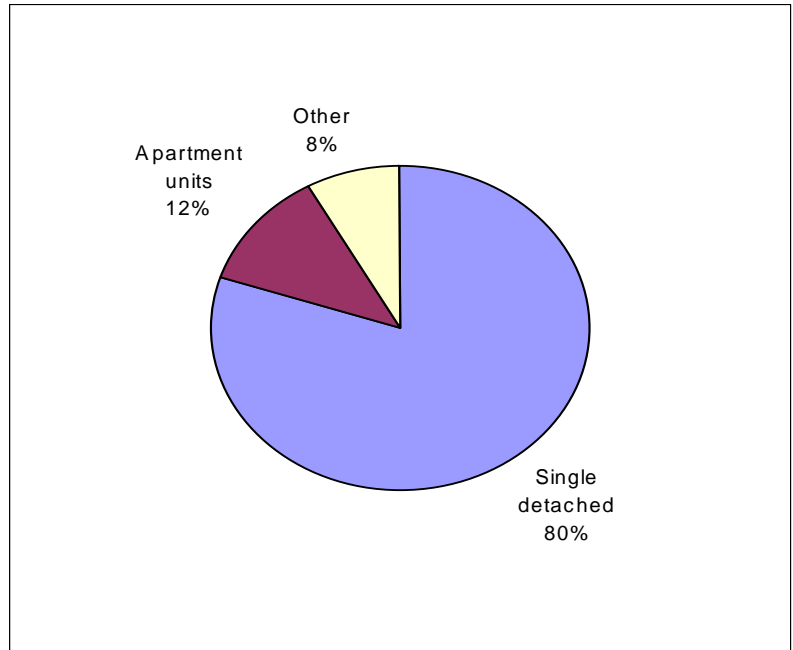
The Saugeen Business Development Centre is a federally supported not-for-profit Community Futures Development Corporation (CFDC) governed by volunteers in partnership with Industry Canada to help develop and diversify local economy by providing

1. Possible term loans up to \$150,000 for equipment, inventory, operating capital, etc;
2. Information related to demographics, labour market and training programs;
3. Information related to government programs and industrial sites;
4. Community Profiles on participating municipalities; and
5. Quarterly economic newsletters.

HOUSING AND CONSTRUCTION ACTIVITY

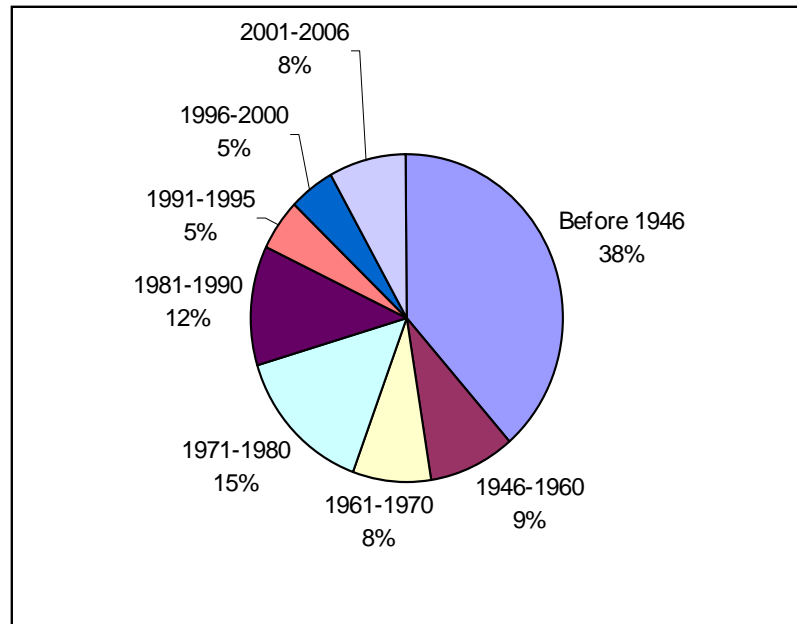
HOUSING STOCK BY STRUCTURAL TYPE

| | |
|-----------------------------|--------------|
| Single-Detached | 2,505 |
| Semi-Detached | 100 |
| Row-Housing | 60 |
| Apt., detached duplex | 35 |
| Apt. building <5 storeys | 305 |
| Apt. building, >5 storeys | 30 |
| Other single-detached house | 75 |
| Movable Dwellings | 30 |
| Total | 3,135 |
| Owned | 2,415 |
| Rented | 710 |



HOUSING STOCK BY PERIOD OF CONSTRUCTION

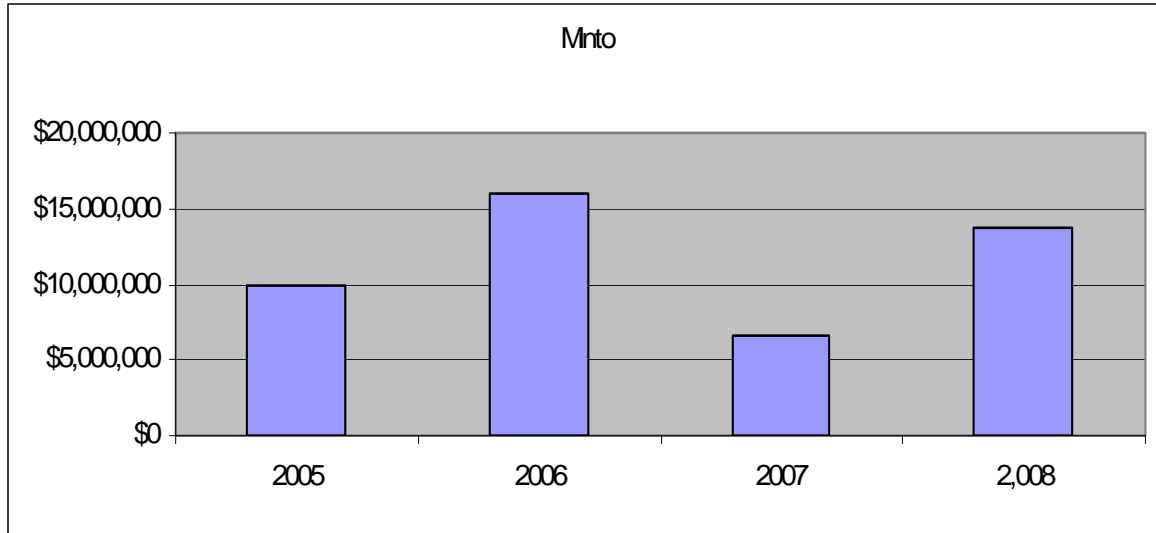
| | |
|--------------|--------------|
| Before 1946 | 1,205 |
| 1946-1960 | 285 |
| 1961-1970 | 250 |
| 1971-1980 | 460 |
| 1981-1990 | 365 |
| 1991-1995 | 155 |
| 1996-2000 | 155 |
| 2001-2006 | 245 |
| Total | 3,125 |



Source: Statistics Canada 2006

HOUSING AND CONSTRUCTION ACTIVITY

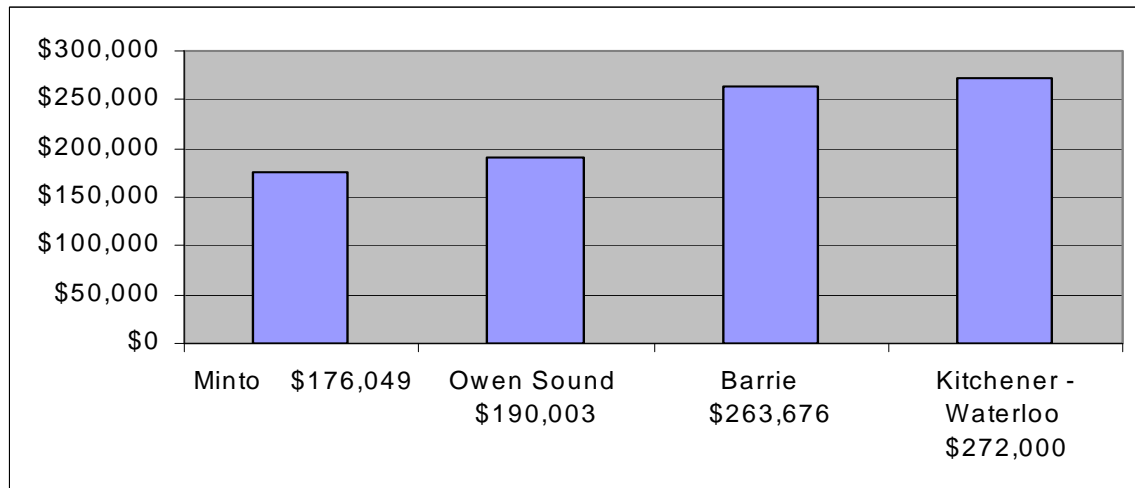
BUILDING PERMITS



Note -

No permit data for 3rd and 4th quarters of 2007
 Source: Survey of Municipal Offices

AVERAGE RESIDENTIAL SELLING PRICE FOR 2008



Source: K-W Real Estate Board,

Simcoe Real Estate Board and the Grey-Bruce-Owen Sound Real Estate Board

LOCAL MUNICIPAL GOVERNMENT

Form of Government

The Town of Minto is governed by an elected council consisting of a Mayor, a Deputy Mayor and five councillors elected for a three year term.

The Town can be reached at (519) 338-2511.

Tax Structure

Please contact the Town Office at (519) 338-2511 for detailed tax rates.

Fire Protection

MINTO FIRE DEPARTMENT- *emergencies dial 9-1-1*

Minto Fire Department Chief: Chris Harrow 519-338-2511

[1. c.harrow@mintofiredept.on.ca](mailto:c.harrow@mintofiredept.on.ca)

Clifford Station

17 Allan St. E. Clifford, ON N0G 1M0

Deputy Chief: Wayne Loos 519-327-8411

w.loos@mintofiredept.on.ca

Harriston Station

87 Elora St. S. Harriston, ON N0G 1Z0

Deputy Chief: Mike MacDougall 519-338-3046

m.macdougall@mintofiredept.on.ca

Palmerston Station

845 King St. Palmerston, ON N0G 2P0

Deputy Chief: Rick Hembly 519-343-3735

r.hembly@mintofiredept.on.ca

Chief Fire Inspector

EZ Fireplan

<http://city.ezfireplan.com/minto/>

Law Enforcement

The Town of Minto is serviced by the County of Wellington O.P.P., 24 hour dispatch 1-800-310-1122. The Administration Centre for the County of Wellington O.P.P. can be reached at 519-343-5770

POWER AND UTILITIES

Electricity

The Town of Minto is served by Westario Power, covering urban areas, and Hydro One, covering the rural areas. Rates vary according to the type of user. Please refer to the following web sites for current electricity rates.

Westario Residential Rates www.westario.com/Residential/RatesConditions/ElectricityCharge

Westario Business Rates www.westario.com/Business/RatesConditions/ElectricityCharge

Hydro One Residential & Business Rates www.hydroonenetworks.com/en/regulatory/rate_schedules

Fuel Oil & Natural Gas

Fuel oil is supplied to the Town of Minto by Chalmers Fuels, Palmerston and North Wellington Co-op Services, Harriston. Natural gas is supplied by Union Gas. Please contact the companies directly for current rates.

Garbage & Industrial Waste Removal

Minto provides weekly garbage and recycling collection in the urban areas of Clifford, Harriston, Palmerston and Minto Pines. Please contact the municipality at (519) 338-2511 for schedules and fees.

Water & Sewer

The rural areas of Minto are generally served by private wells and septic systems. Water and sewer service in the urban areas is provided by the Town of Minto.

INDUSTRIAL SERVICES

Sites Available

The Town of Minto has over 100 acres of industrial land for sale, located in the Palmerston & Harriston Industrial Parks.

Highlights include:

- Fully serviced industrial land
- Large contiguous parcels up to 50 acres
- Lot sizes starting at one acre
- Good access to Southwestern Ontario market
- 40 minutes north of Guelph
- Within 50 minutes of Toyota and Honda plants.
- Lots starting at \$15,000 acre

For more information visit the Town of Minto's Economic Development site at www.mintoed.com

If you are interested in receiving more information on the Industrial Parks please contact Belinda Wick-Graham, Business & Economic Manager at 519-338-2511 ext. 41

TRANSPORTATION

Air Transportation

The Palmerston Airport is located at RR # 1 Palmerston, ON N0G 2P0. The airport is registered with Transport Canada and features two grass runways. Runway 31- 13, 2200 ft. and Runway 27-09, 3000 ft.

Open May 1 - December 31. For more information contact: Frank Spoelstra @ 519-343-5626

The Saugeen Municipal Airport, located just outside Hanover on County Road #2, is the Saugeen community's key to the provincial airport network, offering quality service to both recreational and commercial traffic. Runway 01/19 is approximately 4,000 feet in length and 75 feet in width. The secondary runway 09/27 is approximately 2,500 feet in length and 50 feet in width. Both runways are maintained year round and service is available 365 days of the year between 9:00 a.m. and 5:00 p.m. The professionally maintained runways are capable of servicing and accommodating small to midsize corporate jets and larger commuter-type turbo-prop aircraft. Charters and flight training are available as well as food and catering on a daily basis. The Saugeen Municipal Airport also offers Canada Customs clearance on an as needed basis. For more information, phone (519) 364-3220, or fax (519) 364-7733.

Wingham Airport is a registered aerodrome owned and operated by the Town of Wingham. Wingham airport is situated on Highway 86, 1 mile east of Highway 4 and the town of Wingham. The airport was opened in 1996 with a 4000 foot x 75 foot paved runway and a modern terminal facility. The beacon and runway lighting are operated by the arcal system (type K). For more information contact the Town of Wingham at (519) 357-3550.

Truck Transportation

Minto is well served by a number of local and international carriers including Alex Ivel & Sons Trucking, CGF Transportation Services Inc. and many independent truckers.

Water Transportation

Commercial harbour facilities are located at Goderich, approximately 90 km southwest of Brockton. This harbour is open to Great Lakes shipping from mid-May to early January, depending upon prevailing ice conditions on the lakes.

Commercial harbour facilities are also situated in Owen Sound. This harbour offers between 600 and 700 metres of dockage for large lake freighters at a depth of approximately 6.5 metres. The harbour also offers grain elevator facilities and bulk cement silos with an estimated 15,000 tonne capacity. Loading equipment is generally contained on the incoming freighters, however, equipment is available in Owen Sound through a private contractor.

FINANCIAL SERVICES

Chartered Banks

Minto provides branches of the Royal Bank and CIBC.

Community Futures Development Corporations

The local CFDC, Saugeen Economic Development Corporation, provides financial and technical assistance to small businesses. The maximum loan is \$150,000. It is located at 554 7th Avenue in Hanover. The phone number is (519) 364-3694 or toll-free 1-866-761-7232.

Business Development Bank of Canada

The nearest branch of this organization is located in Stratford and can be contacted by telephone at (519)271-5650 or toll free 1-800-265-2489.

Financial Planning Consultants

Several local independent financial planners and accountants provide financial advice to Minto residents and businesses.

COMMUNITY FACILITIES

Health Care

The Louise Marshall Hospital (Mount Forest) is a community hospital with a rated bed capacity of 37 inpatient beds serving the health care needs of approximately 15,000 people within the hospital's catchment area. Located in the Town of Mount Forest, our fully accredited hospital offers a range of primary and secondary services including 24 hour emergency services, inpatient and outpatient care, specialist clinics and supportive diagnostic services. The hospital has an active staff of seven Family Practitioners as well as consulting staff in General Surgery, Internal Medicine, Radiology, Anesthesiology, Pathology, Obstetrics and Gynecology, Urology, Neurology, ENT and Pediatrics.

Volunteer opportunities are available.

The Palmerston and District Hospital is a community hospital with a rated bed capacity of 35 inpatient beds serving the health care needs of approximately 15,000 people within the hospital's catchment area. Located in the Town of Palmerston, our fully accredited hospital offers a range of primary and secondary services including 24 hour emergency services, inpatient and outpatient care, specialist clinics and supportive diagnostic services. The hospital has an active staff complement of six Family Practitioners as well as consulting staff in General Surgery, Internal Medicine, Radiology, Anesthesiology, Pathology, Obstetrics and Gynecology, Orthopedics and ENT.

South Bruce Grey Health Centre - Walkerton (formerly the County of Bruce General Hospital) offers 24 hour Emergency Service and a full range of ambulatory health services including specialists clinics, breast screening program, laboratory, diagnostic, and electrodiagnostic imaging, physiotherapy, nutritional counseling, lactation counseling, and day program to support the elderly continuing to live at home. Inpatient services include surgical, medical, chronic care, intensive care and family birthing units. New to the hospital is the CT Scanner, which was officially opened October 1, 1999.

Medical Clinics

There are medical clinics in Harriston, Palmerston, Clifford, Hanover, Mount Forest and Durham.

Retirement Homes and Communities

Royal Terrace is a modern long term facility comprising a nursing home and a residential care section located at the edge of Palmerston. Caressant Care operates a nursing and retirement home in Harriston.

COMMUNITY FACILITIES

Cultural Events

The Minto Arts Council operates a gallery featuring rotating exhibits of local artists and historical displays located in the upper floor of the Harriston Carnegie Library. The Arts Council also produces several coffee-house style concerts as part of its Basement Café series. The Grey-Wellington Theatre Guild presents several plays throughout the year in a comfortable theatre located in the historic Harriston Town Hall. The Norgan Theatre in Palmerston presents first-run movies, as well as playing host to an independent film festival. The theatre has been recently re-furbished and features a retractable screen and surround sound.

Churches

The community offers a number of churches representing a wide variety of denominations, including Anglican, Christian Reformed, Lutheran, Mennonite, Missionary, Pentecostal, Presbyterian, Roman Catholic, and United.

Community Service Clubs

Minto is fortunate to have an active volunteer sector. Our facilities and programs are supported generously by Lions Clubs, Clifford Rotary Club, Kinsman & Kinettes, Minto Optimist Club and several others.

Special Community Events

Minto is a busy place throughout the year. Some of the major events taking place include: snowmobile rallies, hockey and broomball tournaments, curling bonspiels, Easter egg hunt, Harriston Garden Festival, Clifford Antique Car and Tractor Show, baseball tournaments, Palmerston and Harriston Fall Fairs, Santa Claus parades and New Year's Eve parties.

Recreational Facilities & Parks

For a small community, the Town of Minto has an abundance of recreational facilities. We have three arenas, two curling clubs, two outdoor pools, six baseball parks, tennis courts, soccer pitches, a dance studio, live and film theatres, three libraries, several pavilions and community halls, walking trails and many acres of parkland.

Community Retail Facilities

Minto has many specialty shops, restaurants, grocery stores and hardware stores located in the urban centres of Clifford, Harriston and Palmerston. We are a half-hour drive to regional shopping centres in Listowel and Hanover and it is only a bit further to the large malls and big-box stores in Waterloo, Owen Sound and Orangeville.

COMMUNICATION MEDIA

Newspapers

Weekly publications include the Minto Express, the Wellington Advertiser, the Listowel Banner and Hanover Post. A variety of national and regional papers are also available within the community, among them the Owen Sound Sun Times, The Toronto Star, Globe & Mail, London Free Press, Guelph Mercury and the Kitchener-Waterloo Record.

Television

A-Channel, broadcasting from London, and CKCO TV, from Kitchener, report area news on a regional basis.

Persona Communications supplies cable television service to the urban areas of Minto.

Radio

Minto is served by CKNX 920 AM and 101.7 FM from Wingham, CJOY 1460 AM and 106.1 FM, CHYM 570 AM and 96.7 FM and CFCA 105.3 from Kitchener. CBC Radio is also available on 100.9 FM.

Postal and Courier Services

The community is served by several post offices in Clifford, Harriston, and Palmerston. These offices offer Priority Post, a postal courier network service offering next day delivery to points within Ontario. Courier services available to the area include FedEx Canada, UPS, and Purolator Courier.

Internet Service Providers

Minto is home to the head office of Wightman Communications which is one of the largest independently-owned telephone and internet providers in Canada. The area is also served by broadband service by High-Speed FX and many other dial-up companies.

EDUCATION

Primary and Secondary Schools

PUBLIC

| Primary Schools |
|---|
| Harriston Senior School (Harriston) |
| Minto-Clifford Public School (Harriston) |
| Palmerston Public School (Palmerston) |

| Secondary Schools |
|---|
| Norwell District Secondary School (Palmerston) |

SEPARATE

| Primary Schools |
|--|
| St. John Catholic School (Arthur) |
| St. Mary Catholic School (Mount Forest) |

| Secondary Schools |
|--|
| St. James Catholic High School (Guelph) |

Post Secondary Facilities

The nearby Owen Sound Campus of Georgian College offers a full schedule of extensive college-level education programs. This facility is a 1 ½ hour commute from Minto.

Universities and colleges are located in Barrie, Guelph, Kitchener, London, Toronto and Waterloo and are within a 2 hour drive from Minto.